

A close-up, high-angle photograph of a woman's face, focusing on her eyes and a slight smile. She has brown eyes and is wearing red lipstick. The background is blurred, showing a blue and black gradient.

**TEAM
BOARD**

Easy does it.

**TeamBoard's
Guide to
Interactive
Whiteboards
in Education,
Training and
Corporate
Environments**



"Technology has a dramatic impact on the way our people communicate. As an IT specialist, my greatest challenge is to find presentation solutions that address the needs of the user-community, require minimal support from my department, and won't be obsolete by the time they're installed."

Interactive whiteboards support many different teaching/learning styles and improve retention during class.

Your school recognizes the value of visual aids, and they depend on you to spend IT dollars wisely.

The paradox is that you buy based on features and technology, but your users demand simplicity.

TeamBoard offers the latest in features and technology, deployed at a level that ensures user satisfaction.

Discover why TeamBoard is the best solution.

TeamBoard is a touch-sensitive, interactive whiteboard

TeamBoard features a unique, 3-way surface:

- 1 It is an outstanding dry-erase writing/projection surface that is guaranteed-to-clean.
- 2 It is an electronic whiteboard that can capture notes and drawings.
- 3 It is an interactive touchscreen that works with any PC or Macintosh application.

TeamBoard Dry-Erase Writing/Projection Surface



The most reliable hardware now features the best dry-erase writing/projection surface. EVER.

TeamBoard is more than a powerful technology solution; it can also be used as an outstanding dry-erase whiteboard and an ideal projection surface. The secret is EVS™ Presentation Surfaces



An Egan TeamBoard exclusive, EVS is an enhanced dry-erase writing surface that is ideal for classroom (or war room) durability. In fact, EVS really is guaranteed-to-clean.



With EVS, even permanent marker, if used by mistake, is easy to erase.

For outstanding performance, try the Egan Dust-Free Whiteboard Solution (EVS + EganMarkers + the EganCloth). It's truly amazing!

The beautiful, low-glare EVS surface is perfectly suited for projection. It provides a full 160° comfortable viewing angle, to project a beautiful visual from practically any seat in the house. The matte-white surface ensures that you will not have hot spots or glare – even without dimming the lights.



Since 1967, Egan & TeamBoard have led the marketplace in the development and manufacture of visual communication products.

The TeamBoard Promise:

- **Versatile:** TeamBoard is a superior writing/projection surface, and an interactive touchscreen.
- **Sensible, easy-to-use tools:** TeamBoard Draw works with virtually **any** application – you decide.
- **Guaranteed-to-clean:** no ghosting, even permanent marker erases from our whiteboard surface.
- **Guaranteed to last:** professionally manufactured, TeamBoard is built to last.

No proprietary, time-wasting gimmicks:

- **No built-in technology:** completely removable, modular components for simple upgrades.
- **No special wiring:** TeamBoard uses standard 'Cat5' (RJ45) shielded cabling with structured wiring compatibility.
- **No special whiteboard tools:** use **any** quality dry-erase marker/eraser.
- **No special touchscreen gadgets:** use your fingertip or a stylus.
- **No training required:** the simple QuickStart Guides are all you'll ever need.

with durable construction, and remarkable ease-of-use.



TeamBoard Intelligent Whiteboard Mode

Created for true ease of use, TeamBoard 'Whiteboard Mode' captures what you draw the instant you touch the writing surface. Notes and drawings are captured to your PC, saved in popular cross-platform formats (PDF, JPEG, etc.), and shared electronically, emailed, or printed.

The TeamBoard ActionBar and TeamBoard Draw touchscreen tools provides an easy-to-use interface designed to accommodate content preparation and lesson development.



TeamBoard Suite includes powerful TeamBoard Draw annotation software



TeamBoard Interactive Touchscreen Mode

In 'Interactive Mode', TeamBoard Draw turns on the real power of computer-based presenting and training. Our latest software includes all the powerful features you need, in an incredibly simplified format.

The innovative TeamBoard AccessBar brings all the tools you need into one handy palette. Save favorite, frequently-used programs into the AccessBar. Drive any of your PC applications – like Microsoft® Excel, AutoCad, a web browser (virtually any application) – right at the board, with a simple touch of your finger.



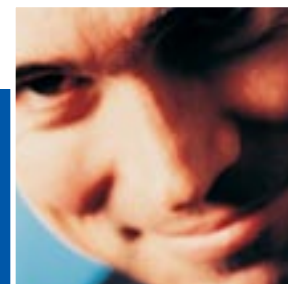
The AccessBar is a virtual 'tool box' that provides quick access to interactive whiteboard tools and favorite PC applications.



An affordable Information & Communication Technology (ICT) solution for any level of education, TeamBoard with RM Easiteach™ Studio is truly a remarkable classroom experience.

The Bottom Line

"Our sales & marketing people are really comfortable using PowerPoint. The training group uses multiple PC applications. Choosing TeamBoard was easy. It works with any application, offers AccessBar short-cuts and really easy-to-use tools that keep the presenter on-track. TeamBoard has definitely listened, and responded with products that work for 'real' people like us."





"Our school requires interactive whiteboards that offer flexibility and reliability. The Art Department is teaching the latest multimedia and animation software, the Science Department is teaching Robotics, and the elementary teachers use a curriculum-based package that is specified by the District Board."

TeamBoard turns the curriculum software your school has chosen into an over-achiever.

Designed to work with any application, the TeamBoard ActionBar and AccessBar provide simple touchscreen short-cuts to powerful classroom tools.

TeamBoard gives you the freedom to teach your way... even better.

TeamBoard Education

TeamBoard is:

- A- An outstanding projection surface
- B- A guaranteed-to-clean, dry-erase whiteboard
- C- An intelligent whiteboard (captures notes)
- D- An interactive touchscreen (works with any application)
- E- All of the above**

TeamBoard is:

- A- **Fingertip-driven** (no special pens or gadgets)
- B- **Compatible** (works with any third-party PC software)
- C- **Intuitive** (TeamBoard annotation tools are easy-to-use)
- D- **Free** (TeamBoard Draw upgrades are free of charge)
- E- All of the above**

A remarkable classroom experience.®

Freedom to teach your way



TeamBoard sets you free to use any third-party software on your PC (Windows or Macintosh). Intuitive annotation tools work seamlessly with your software as you highlight, draw, capture, and export to universal file types (i.e. JPEG, PDF).

Freedom at your fingertips

TeamBoard provides remarkable freedom at the board. There are no gadgets to handle, simply touch the TeamBoard with your fingertip. You're free to teach right at the board, your fingertip is the mouse.

Your PC is right at your fingertips with TeamBoard AccessBar

All the tools you need reside in one handy palette that floats over your applications. Annotation, Page Sorter, Virtual Keyboard and Virtual Mouse assist you in commanding the computer right at the board.

Assign favorite applications to the pop-up folder, and customize them by saving frequently-used functions in the application tool palette.



TeamBoard Draw AccessBar collapsed



TeamBoard Draw AccessBar expanded provides quick access to whiteboard tools



TeamBoard Draw AccessBar fully expanded to show customized RM Easiteach shortcuts



Invest in a classroom solution that your teachers and students will really use.

Improved Education

- Improve student participation: at the screen you can really interact with the entire class.
- Increase student comprehension: eye contact improves student's attention and retention.
- Teach your way: TeamBoard sets you free to use virtually any software application on your computer.
- No lesson disruption: eliminate trips back and forth to the PC, searching for applications.

Improved Tools

- Easy to learn: you already understand your applications, just review the simple annotation tools.
- Easy to use: point at an active element and touch it to activate it, it's that simple.
- No special gadgets or pens: your fingertip or favorite stylus will do just fine.
- Single-touch ActionBar buttons include: eraser, pen colors, new page, print, beginning/end.
- User-definable: AccessBar stores applications and frequently-used software features...

It really is that easy.

Teachers know that whiteboards, projectors and related technologies offer a huge benefit to the classroom experience.



The 6048 TeamBoard touchscreen pictured at left is displaying a "Whole-class Math" lesson from Pinter Software. TeamBoard works well with many popular education software packages. Visit www.teamboard.com to learn more.

Note: TeamBoard recommends ceiling mounted data projectors in an educational setting. Data projector, computer, shelf and projector stand not included. WiFi capability optional.



RM Easiteach Education Bundle

RM Easiteach makes interactive whiteboard teaching so easy

(Easiteach bundles are available to recognized educational institutions only.)

RM Easiteach features a variety of teaching tools including:

- Resource Banks
- Word Libraries
- Multimedia Bank with 1000's of graphics, video and flash animations
- Spotlight feature focuses attention on image details
- Handwriting Recognition
- Calculator
- Spreadsheet and Database tools
- Animation tools - Objects move and appear on command
- Speech Tool reads on-screen text out loud
- Easiteach tools for drawings and shapes.

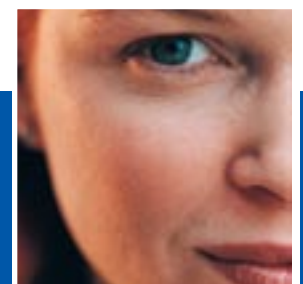
TeamBoard RM Easiteach Studio Bundle

RM Easiteach Studio software (for Windows™ only) combines with TeamBoard to make lessons exciting, fun to share, and easy to reuse. Suitable for use across the entire curriculum, Easiteach Studio and optional 'plug-in' content packs provide tools and content for specific subject and topic areas.

- Create interactive lessons that engage the class.
- Save and reuse lessons and share them with colleagues.
- Select extra content and subject support per lesson.
- Model and demonstrate concepts, ideas, and processes.
- Promote effective questioning and assessment.
- Increase the depth and pace of learning.

The Bottom Line

"RM Easiteach makes it simple to use exciting interactive whiteboard technology in any classroom. The optional plug-in modules make it easy to create engaging lessons, whether you're using a lesson within the software, or making a new one from scratch. There are endless possibilities for bringing concepts to life!"





"Our meetings are fast-paced and extremely interactive. Sessions may include a number of participants, on-site as well as at satellite locations. We needed a user-friendly interface, that offers the flexibility for team input, and the ability to share data with everyone immediately."

TeamBoard Draw provides the essential tools and aids to intelligently assist you in content preparation and delivery. You'll really enjoy this intuitive, easy-to-use annotation application.

TeamBoard Draw offers a comprehensive feature set to accommodate the most demanding environment.

Users quickly understand TeamBoard's AccessBar and ActionBar, free from restricting tools and cumbersome functionality.

TeamBoard Draw – Simply powerful

An electronic whiteboard that's guaranteed-to-clean...



TeamBoard Draw is an advanced presentation, training and communication application that adds remarkable functionality to TeamBoard. Advanced four-point calibration provides excellent, high-resolution accuracy.

TeamBoard Draw – 'Electronic Whiteboard Mode'

Whiteboard mode captures everything that is drawn on the TeamBoard – without using a data projector – directly into a digital file. This data can be printed, shared electronically, or saved for later use.

A great tool for distance learning, you can freely download TeamBoard Draw to virtually ANY computer. Remote sites can easily share ideas and modify content.



TeamBoard Quick Start Guides

Training? What training?



TeamBoard Draw was designed for ease of use. A few minutes with the Quick Start Guide is all you need.

Simple, effective tools in a no-nonsense, uncomplicated format.

Create:

- Draw and annotate freehand over any application (no special gadgets required, just your fingertip).
- Create shapes automatically, cut/copy/paste, move/edit/erase selected or entire objects.
- Import background images from a scanner or camera.
- Create short-cuts to frequently-used applications.

Deliver:

- Access any computer application you need using your fingertip or stylus.
- Use your scanner to bring up-to-the-minute data into the presentation.
- Annotate the full screen or selected areas of it, draw with a highlighter, dashed line and custom colors.
- Type text into your drawing at the screen using the Virtual Keyboard.

Publish:

- Capture revisions and share collaborative screen input via print and email.
- Export pages, or your entire workbook, to multiple image formats (.pdf, .html, .jpg, .png, .bmp).
- Reorganize your pages with the Full Screen Page Sorter.
- Use industry-standard apps to collaborate with your global team (NetMeeting, etc.).

An interactive touchscreen that's ideal for projection...

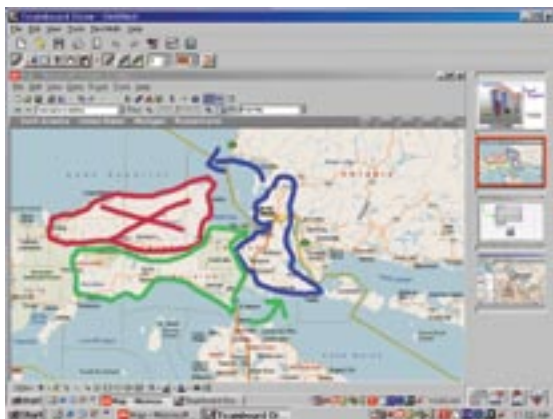
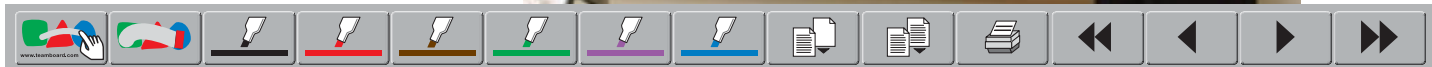
TeamBoard Draw – 'Interactive Mode'

TeamBoard Draw, the industry's smartest interface, provides outstanding functionality. Connect TeamBoard to your computer and data projector to access computer applications right at the board.

Your fingertip works like the computer mouse, when your PC desktop is projected on-screen. The touch of your finger acts like the click of the mouse. There is no need to move from the front of the room, you can operate virtually any application at the board.



The TeamBoard Draw ActionBar provides one-touch buttons to access Erase, Pen Colors, and other frequently-used functions.



TeamBoard Draw application displaying the Page Sorter

TeamBoard Draw Workbook

TeamBoard Draw captures screens into a workbook where you can save, print, email, import images, rearrange pages, create new screens... it's an extremely powerful interface.

Drive virtually any PC application right at the board, with a simple touch of your finger. One-touch features, such as pen colors, print and erase are always available on the TeamBoard ActionBar that is printed along the bottom of the TeamBoard.

TeamBoard Draw's powerful annotation and drawing tools enable you to capture ideas and communicate them instantly. TeamBoard Draw provides a permanent record of all notes, drawings, and lesson plans. Save them for future use, print them for reference, or email them for later review.



TeamBoard Draw floating toolbar (with shape tool active)

The TeamBoard Draw AccessBar

All the tools you need reside in one handy palette that floats over your applications. Annotation, Page Sorter, Virtual Keyboard and Virtual Mouse assist you in commanding the computer right at the board.

Assign favorite applications to the pop-up folder, and customize them by saving frequently-used functions in the application tool palette.



TeamBoard Draw AccessBar expanded provides quick access to whiteboard tools



TeamBoard Draw AccessBar fully expanded to show customized PowerPoint shortcuts

The Bottom Line

"It's easy to lose your audience when you're presenting complex or detailed information. Our on-going challenge is to ensure that everyone is on the same page throughout the meeting. TeamBoard Draw is the perfect solution. We start our presentations in PowerPoint, move to Excel to explain a graph or chart, jump on-line for up-to-the-minute market comparisons, annotate data based on group input, and email PDFs of the final report before the group has left the building."





"Integrating technology into our training and meeting rooms is always a challenge. It is time-consuming, yet essential, to evaluate key suppliers to ensure we achieve the desired outcome: well-planned, functional rooms that maintain our corporate design aesthetic."

Egan & TeamBoard build tens of thousands of whiteboard products every year.

Nearly forty years of experience has given Egan the expertise to deliver quality, durability and reliability that business facilitators expect.

TeamBoard joined Egan in 1994 as a subsidiary specializing in interactive whiteboard applications.

Egan & TeamBoard have developed products that are manufactured with a keen sense of design, and outstanding quality. These products offer ideal presentation solutions for everyone.

www.teamboard.com/products

TeamBoard – Simple integration

Visual aids should be practical, and create a strong, dynamic focal point.



TeamBoard Track Mount

TeamBoard Track Mount combines the space-saving advantages of wall mounting, with the flexibility of 'anywhere-on-the-track' positioning. Easily mount and slide TeamBoard anywhere on the track. Boards can be moved on mobile stands, or they can be hung in any room equipped with a track system.

Sizes: 60" w x 48" h, 48" w x 36" h

TeamBoard Draw

TeamBoard Draw Software is a popular tool for use with tablet PCs and touch sensitive plasma screens.

It's one-touch access to powerful annotation features make it an essential tool for interactive presentations.

TeamBoard Draw is included with every TeamBoard. For more details, please visit: www.teamboard.com/shop



Unique design, superior craftsmanship, and a five-year warranty.

- All Egan TeamBoard products come with a five-year warranty.
- TeamBoard features a durable, dry-erase writing surface, guaranteed-to-clean.
- TeamBoard offers the lowest-glare projection surface in the industry.
- Available in these sizes: 60" w x 48" h; 48" w x 36" h.
- TeamBoard models are built to offer modularity and room appeal.
- TeamBoard surfaces are ideal even in bright rooms with 1000 to 3000 ANSI Lumen Projectors.



TeamBoard Wall Mount

The Wall Mount TeamBoard offers maximum utility in a rugged anodized aluminum or custom color frame for simple track mounting – installs in seconds directly to a length of track on the wall.

Sizes: 60" w x 48" h, 48" w x 36" h



TeamBoard Cabinets

TeamBoard is offered in award-winning Egan Visual Cabinetry, in Wood Veneer or Etex finishes. Cabinets include a tackable fabric panel on the inside of each door, a flipchart and tearbar.

Sizes: 60" w x 48" h, 48" w x 36" h



TeamBoard Mobile Stand

TeamBoard Mobile is ideal where multiple location use is the norm or where wall mounting is not practical. A substantial base and durable casters are designed for easy movement. Options include an equipment shelf and a swing out tray (not exactly as shown).

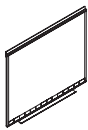
Sizes: 60" w x 48" h, 48" w x 36" h



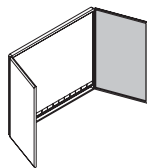
TeamBoard Bluetooth Wireless Tablet

Designed for portability, TeamBoard's Bluetooth™ wireless tablet is a versatile compliment to any TeamBoard/data projector installation. TeamBoard tablet may also be used with any data projector/PC to add interactivity.

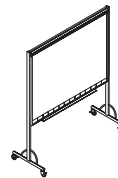
Ships with TeamBoard Draw SA software. Connects via USB, compatible with Windows™ only. Size: 6" w x 4.5" h.



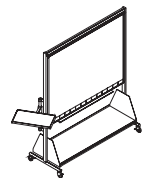
Wall Mount
60" w x 48" h
(1524mm x 1220mm)
48" w x 36" h
(1220mm x 915mm)



Wood or Etex Cabinet
60" w x 48" h
(1524mm x 1220mm)
48" w x 36" h
(1220mm x 915mm)



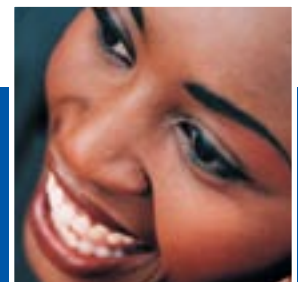
Mobile Stand
60" w x 48" h
(1524mm x 1220mm)
48" w x 36" h
(1220mm x 915mm)



Mobile Stand with shelf
60" w x 48" h
(1524mm x 1220mm)
48" w x 36" h
(1220mm x 915mm)

The Bottom Line

"Installation is always an issue when you're dealing with a large facility like ours. We were so delighted when the TeamBoard delivery was on time, and the installation was surprisingly simple; one screwdriver, six screws, and a tape measure... if only life were always this easy."





"I need to know my supply partners are reliable, from the quality of their products to their support. I need to feel secure that they'll be there when I need them, and that they can help resolve my needs today, and in the future."

Egan TeamBoard Inc.
manufacturing products
with guaranteed,
uncompromising
quality... since 1967.

TeamBoard – quality manufacturing that makes sense

Building products right.



With over 225,000 feet of manufacturing space, we get the job done in-house. We are able to control every step of the process to assure component quality, on-time delivery, and on-going product development. Our production teams purchase only the finest materials from the best suppliers.

The result: a high-tech factory providing great products at a great price.

TeamBoard products are designed to be durable and reliable. Another important feature, built right in, is easy installation.



Egan TeamBoard is a No Hassle Company

Software updates are always available free of charge on-line. Technical support is built into the software, available on our web-site, or with a call to our customer service staff.

If you have any problems, pick up the phone and let us know. We expect, and need, our customers to be delighted with our products and services.

Why TeamBoard is the best business decision.

- **Incomparable surface:** TeamBoard features the best dry-erase writing surface, guaranteed-to-clean – even permanent marker erases easily.
- **Superior projection surface:** the low-glare surface provides ideal projection in any light.
- **Intelligent product design:** no built-in technology (the only removable controller in the industry).
- **Guaranteed to last:** professionally manufactured, a TeamBoard is built to last.
- **Versatility:** it's an electronic whiteboard and an interactive touchscreen.
- **Sensible, no-nonsense software:** TeamBoard Suite handles virtually **any** application – customize the Access Bar to fit your needs.
- **Simple installation:** one screwdriver, six screws, a tape measure... and you're wall mounted.
- **Standard wiring:** TeamBoard uses standard 'Cat5' (RJ45) cabling with structured wiring compatibility.
- **Remote compatibility:** present the way **you** want, face your audience, or roam using a remote.
- **Improve audience rapport, and presentation success:** TeamBoard helps you interact with the audience.

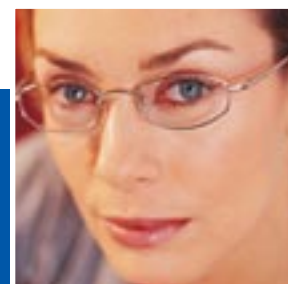
We invite you to compare TeamBoard – feature for feature

Each TeamBoard includes these distinctive features.

Multi-Purpose Product Design	TeamBoard Models	Compare	Compare
▪ Durable Whiteboard Surface (guaranteed-to-clean)	✓		
▪ Low-Glare Surface (ideal for projection - no need to dim lights)	✓		
Dedicated Software Installation Choices			
▪ TeamBoard Draw (featuring annotation tools and workbook)	✓		
▪ Easiteach Studio (for Educational institutions)	✓		
Easy To Use Interface			
▪ Access tools from System Tray or Dashboard	✓		
▪ Access tools from Start Menu	✓		
▪ Save favorite applications/functions in AccessBar	✓		
▪ Clear, understandable icons and visual cues	✓		
Built-in Application Support			
▪ RM Easiteach Studio	✓		
▪ Paint	✓		
▪ NetMeeting / LiveMeeting	✓		
▪ Floating Annotation Tools and AccessBar	✓		
▪ Virtual Keyboard: enables text input at the screen	✓		
▪ Virtual Mouse: controls left/right mouse clicks	✓		
▪ Custom Macro Creation Tools	✓		
One-Touch ActionBar Controls			
▪ Beginning/End	✓		
▪ Pen Color	✓		
▪ Erase All	✓		
▪ Erase Area	✓		
▪ Next/Previous Screen	✓		
▪ New Page	✓		
▪ Insert Page	✓		
▪ Print	✓		
▪ Capture	✓		
▪ AccessBar: one-touch to favorite applications	✓		
Connectivity			
▪ Standard RJ45 Flush-Mount Wall Jack (Serial/USB)	✓		
▪ Standard RJ45: up to 150' (45m) to Serial board	✓		
▪ Standard RJ45: up to 50' (15m) to USB board	✓		
▪ Standard WiFi (802.11b): 1200' (365m) + link to board (open space)	✓		
No Special Gadgets Required			
▪ Standard Quality Dry-Erase EganMarkers & EganCloth	✓		
▪ Standard Stylus	✓		
▪ Standard Remote	✓		
▪ Fingertip Capable	✓		
Quality Manufacturing Features			
▪ Removable Hardware Controller (an industry exclusive)	✓		
▪ Low-Glare EVS™ Presentation Surface (no hot spots or glare, without dimming lights)	✓		
▪ Superb Dry-Erase Whiteboard Surface (EVS is guaranteed-to-clean)	✓		
▪ 5-Year Warranty	✓		

The Bottom Line

"We researched all the top manufacturers, and saw a lot of promises for 'ease of use' and 'great features'. The 'cost to purchase' is about the same product-to-product, but the 'cost of ownership' really makes the difference. The IT department demands features, provided they don't have to support gimmicks and toys. (And training our trainers to use a simple product is absolutely out of the question!) That's where TeamBoard stands out as truly unique. They've really considered what impacts our 'Needs Analysis'. TeamBoard lives up to the promise of simplicity with an interface our trainers enjoy using, and intuitive functions available right at the board. The AV team really liked TeamBoard's structured wiring compatibility, standard connection jacks and cables. TeamBoard has the mix that works in our facility."





"TeamBoard keeps upgradability, compatibility, and connectivity in mind. The 'no hassle' guarantee is real, too. TeamBoard is the best business decision."

Easy to specify

TeamBoard's Unique Controller

Thousands of our boards – that were installed when cell phones still weighed pounds not ounces – are still operating at top performance.

TeamBoard was designed to upgrade easily, in the field. The controller is housed in a compact, snap-in module that can be upgraded with the TeamBoard still hanging on the wall. An overnight courier and about 5 minutes of your time is all it takes to make the switch. Software updates are online at www.teamboard.com



TeamBoard Compatibility



Windows™



Macintosh™



USB



WiFi



Remotes

TeamBoard Hardware and Software Specifications

PC Requirements

Operating System:	Windows® 95/98™,NT™	Windows® Me™	Windows® 2000™	Windows® XP™	Macintosh® OS-X 10.2
RAM:	256MB	256MB	256MB	256MB	256MB
Hard Drive Free Space:	90MB	90MB	90MB	90MB	90MB
CPU:	Any Pentium	Pentium 150	Pentium 133	Pentium 233	G3 or faster
CD-ROM Drive:	Required	Required	Required	Required	Required

Connectivity Requirements*

Serial Controller:	COM Ports (9 Pin Serial Port)
USB Controller:	USB Port

Power Supply (for Serial Controllers only)

Input Voltage:	100 – 240 Vac
Input Frequency:	47 – 63Hz 0.4A
Output Voltage:	9 Vdc
Output Current:	200 mA

Guarantee

Egan TeamBoard Inc. warrants the construction and components of its products for normal and reasonable use for a period of five years from the date of manufacture. The TeamBoard is backed by quality construction, including a honeycomb core lamination, a superior matte-white low-glare drawing/projection surface, and a high-resolution controller tested and proven in industrial environments.

Egan Visual Surface is guaranteed by Egan TeamBoard Inc. to be an effective projection surface for the life of the product. Egan TeamBoard Inc. offers a 5-year limited warranty, from the date of manufacture, on the EVS Pro™ surface, provided proper care has been maintained. EVS Pro is a matte-white surface, suitable for projection, and is backed by quality construction, including a honeycomb core lamination. The use of harsh cleaners, permanent markers, paint, low quality dry-erase markers, low-odor dry-erase markers, damage from sharp objects, and other abuse, may damage the surface and may void any warranty. Use Egan Markers and the EganCloth® only. Other markers and erasers can leave residue and ghosting.

This warranty does not apply to defects resulting from negligence, damage from sharp objects, lack of proper care and maintenance or storage in extreme environments. All decisions of workmanship, failure, misuse and abuse remain with the manufacturer. Items may only be returned with prepaid shipping, and with the written prior consent of Egan TeamBoard Inc.

No warranties other than those contained herein shall be applied.



Service

1. TeamBoard customer service is as close as 1-800-263-2387 (North America), International 1-905-851-2826.
www.teamboard.com/tech or www.teamboard.com/support
2. Key elements are available and easily replaceable on location.
3. Software enhancements can be downloaded from www.teamboard.com/tech



1-800-263-2387
or visit us on-line:
www.teamboard.com

www.teamboard.com/tech
www.teamboard.com/support

#024B014_r6 06/06:5M © Egan TeamBoard Inc. 1996-2006. All Rights Reserved. All other product names are trademarks of their respective owners. Printed in Canada. This document is available on-line at: www.teamboard.com/docs/024B014_r6.pdf

Easy does it.